

Infrared Sensor Instruction

SPECIFICATION:

Operating Voltage: 110-240V/50-60Hz

Detection Range: 120° (side-view) / 360° (top-view)

Detection Distance: Max. 6m

Detection Speed: 0.6 ~ 1.5 m/s

Average Load: Max.800W (~110V AC) / Max.1200W (~220V AC)

Adjustable detection distance, time-delay, ambient light

Automatically move detection

Performance stability

Day/night adjustment

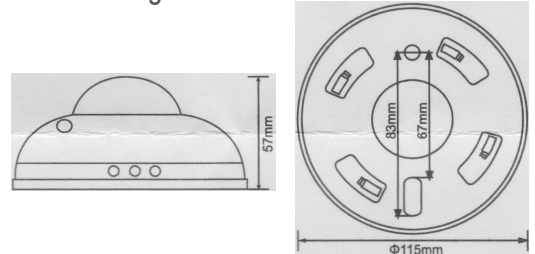
Environment Temperature: -20°C ~ +40°C

Environment Humidity: Max. 93%

Ambient Light: <10Lux

Time-Delay: Min. 5seconds ~ Max. 7minutes

Installation Height: 2m ~ 4.5m

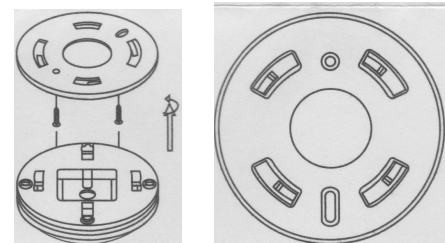


CAUTION:

1. Before installation, please read instruction carefully and preserve it well.
2. Only maintained and installed by qualified electrician.
3. Keep away the heating/streaming/air conditioning devices.
4. Don't impact the lens with any object.

INSTALLATION:

1. Switch off the power
2. Turn clockwise the bottom-stand and take off it. The power wire cross the hole in the middle of bottom-stand.
3. The bottom-stand is fixed on the selected position with inflated screw.
4. Connect the power and the load into the connection-wire column of the sensor according to connection-wire diagram.
5. The sensor aimed at the mouth of bottom-stand and turned anti-clockwise.



OPERATION:

1. Detection-angle / Detection-distance / Installation-height are shown in the figures respectively.

a. Figure 1 shows that the detection angle is 120° (side-view) and 360° (top-view).

b. Figure 2 shows also detection-distance is max. 6m and installation-height is max.4.5m.

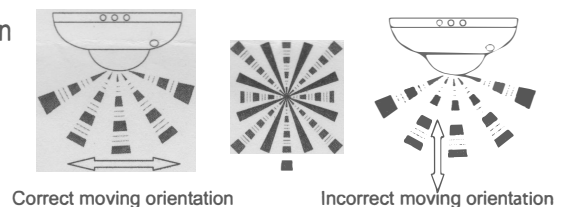


Figure 1

2. You can adjust distance detection (SENS) / time delay (TIME) / ambient light (LUX) using adjustment knobs as shown in the figure.

a. To adjust distance detection to a high level please turn the adjustment knob clockwise. Max. detectable distance is approx. 6m.

b. Time delay is adjustable from 5 sec to 7 min (+/-10%). To increase time delay, please turn the adjustment knob clockwise.

c. Ambient light sensitivity level is adjustable between 5-1000 LUX. To use sensor in daylight conditions please turn the adjustment knob counterclockwise. In poor illuminated environment adjust the appliance by turning the knob clockwise.

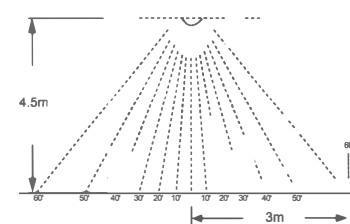


Figure 2